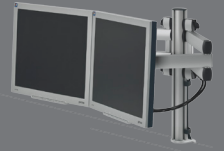


Proven Applications

MSS



MORE SPACE SYSTEM - OFFICE WORK SPACES

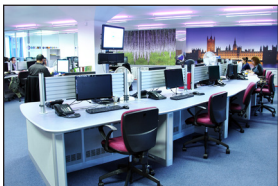


Today's office spaces are as diverse as the employees and businesses they serve. Whether cubicles, private offices, or co-working spaces – these areas all need to be flexible to accommodate the technology that keeps us productive and creative. The Novus More Space System elevates technology to increase work space, improve workflow, and provide ergonomic viewing comfort.

In all work spaces, ergonomic comfort is critical for health and well-being. Whether it's a single monitor, dual monitors, or tablets, Novus More Space makes it easy to adjust these devices to the individual user's preferred position for a custom ergonomic fit. Change the height, range, and screen angle to enhance viewing comfort and prevent eye and neck strain.

Novus More Space Systems' space-saving monitor arms, mounts, and tablet holders can be tailored to suit any existing space or incorporated into new designs. More Space Complete Sets make it easy to quickly set up a more efficient work space for any environment. Or, customize spaces with the unique capabilities of each line – MY, TSS, and LiftTEC®.

RECENT OFFICE APPLICATIONS



NOVUS® DAHLE®

Dahle North America, Inc.
49 Vose Farm Road
Peterborough, NH 03458
(800) 995.1379



www.NovusMoreSpace.com

CUSTOM OPTIONS AVAILABLE

Novus More Space System is completely customizable for any application. For assistance in providing a solution for your needs, please contact us at (800) 995-1379 or send us an email.

